

Where Can You Learn More About PCMH?

Visit mhcc.maryland.gov/pcmh/pcpcc.net/consumers-and-patients, or contact our nurse navigator at 240-215-6395 to discuss any questions you may have regarding PCMH.

Schedule Appointments

Locations

- 194 Thomas Johnson Drive, Suite A
Frederick, MD 21701
- 7211 Bank Court, Suite #230
Frederick, MD 21703
- 504 East Ridgeville Blvd, Suite #120
Mt Airy, MD 21771
- 3000-D Ventrice Court
Myersville, MD 21773

Hours

Please visit monocacyhealthpartners.org/practices/parkview-medical-group/ for current office hours or to schedule your appointment online at a time convenient for you. We do offer Saturday hours at the Thomas Johnson Drive, Mt. Airy and Myersville locations.

Walk-In Clinic

No appointment is necessary for acute care needs.

Location: 194 Thomas Johnson Drive, Suite A

Hours: Mon - Fri 8A.M. - 8P.M.
Sat - Sun 8A.M. - 6P.M.



194 Thomas Johnson Drive, Suite A
Frederick, Maryland 21702

240-215-6310
TDD 240-566-3700

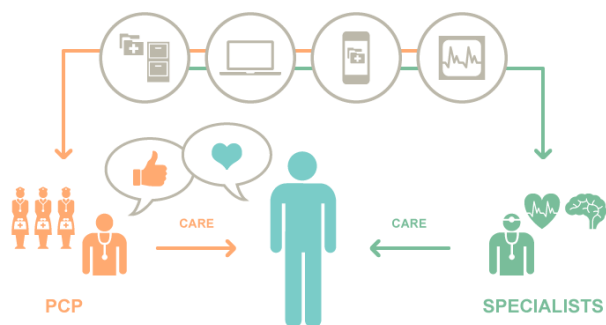
monocacyhealthpartners.org

PCMH Patient Centered Medical Home



Superb Quality. Superb Service.
All The Time.





What does a Patient Centered Medical Home do for you?

We are committed to offering comprehensive, quality healthcare, enhanced access through expanded hours, and new services, as well as important resources and tools which enable us to better address your medical needs at no additional cost to you.

- 24/7 access to your health record, communication with your care team, bill payment, and more through our Patient Portal at nextmd.com.
Phone: 240-215-6310
- Assistance with locating community resources to help overcome any barriers that may negatively affect your health such as prescription coverage, transportation, and employment. Please notify your Care Team for the proper referrals.

What are the benefits of the Patient Centered Medical Home?

A team-based approach to your care

- We provide a team of nurses and support staff who will work with you to coordinate all of your healthcare needs to ensure that you receive the best care possible across multiple settings. We encourage you to choose a personal clinician to allow us to meet these goals more efficiently.

- We collaborate with an onsite Pharmacist and Care Coordinators to provide quality, evidence based care.
- Improved healthcare access**
- Parkview offers same day urgent care appointments through our Walk-in Clinic at the Thomas Johnson Drive office location.
 - Call the office or use direct messaging for any questions during business hours.
 - An on-call provider is available for urgent care issues outside of our normal business hours. Please call 240-215-6310 for assistance.



What does it mean to be a PCMH recognized practice?

NCQA Patient Centered Medical Home (PCMH) recognition is the most widely used assessment to ensure patients are receiving the right amount of care at the right time.

Parkview Medical Group has gone through a structured recognition process to align our services to provide comprehensive care for all patients.

The Medical Home is a concept, not a place. It is an innovative, team-based approach to providing healthcare services. We would like our practice to be the first place you think of for all your medical needs.



What do you need to do as a patient of our PCMH practice?

Parkview Medical Group offers holistic and comprehensive care for all our patients. As our patient, we encourage you to ask questions, share your feelings, and take an active part in your care. We want you to leave our office with a clear understanding of our expectations, care goals, and next steps. It is also important that you notify your provider when you receive care elsewhere in order for us to update your records. All of this will help ensure you receive the best possible care.

Feedback

Please provide us with your feedback by visiting our patient portal at nextmd.com and using the Experience Feedback option under Mail.